

# NEXUS<sup>®</sup> 700 SERIES

Universal hardness testing system



The NEXUS 700 series closed-loop hardness tester features a full color operator panel displaying hardness values for all common hardness test procedures. Load cell, force feed back, closed-loop load technology avoids overshoot and guarantees accurate test forces at each hardness test scale. The NEXUS 700 series combines a fully-automatic controlled test cycle with a wide load range from 2 - 187.5 Kgf. The multi language easy to operate user panel gives access to stored test programs in 3 different hardness scales (HR, HB, HV). The programmable user panel allows easy access to user-defined test programs, including test force, application time, conversion, and shape correction according to ISO and ASTM standards.

The interchangeable objectives, ranging from 37.5x - 140x, provide a wide application field within the automotive, aerospace, and general manufacturing industry.

The new INNOVATEST NEXUS series stands for:

- Accurate test force
- Highly accurate measurement
- Excellent Gauge Repeatability & Reproducibility
- Efficient and flexible use

**LOAD CELL, CLOSED LOOP SYSTEM**


**Colour:** Laboratory White



## FEATURES:

- Load cell, force feedback, closed loop system
- Load range 2 up to 187.5Kgf
- Complies to all applicable EN/ISO and ASTM standards
- Shape correction values for curved surfaces
- High-quality depth measuring system (Rockwell, HBT, HVT)
- Very user-friendly, low training requirements
- Possibility to store 19 batch files with statistic results
- Direct printer and/or PC connections via USB-2

Suitable to determine the hardness of a wide variety of metal and plastic parts.

## TECHNICAL SPECIFICATIONS

• Hardness scales	Brinell, Vickers, Rockwell
• Load application	Load cell, force feed back, closed loop system
• Load range	2 - 187.5Kgf
• Optical system	Microscope, with optional LED ringlight
• Eyepiece	15x magnification
• Objectives	Interchangeable 37.5x and 70x magnification
• Scale resolution	0.001mm (1 micron)
• Display	Full color OLED display, testing results, statistics, built in hardness calculator, etc.
• Standards	Complies to EN/ISO and ASTM standards
• Test loads	2, 2.5, 3, 5, 10, 15, 15.625, 20, 30, 31.25, 45, 50, 60, 62.5, 100, 125, 150, 187.5
• Vickers test range	HV 2, 3, 5, 10, 20, 30, 50, 100, 120 HVT 50, 100Kgf
• Brinell test range	HB1, 2.5, 5, 10, 30Kgf; HB2.5/6.25, 15.625, 31, 25, 62.5, 187.5Kgf; HB5/ 25, 62.5, 125kgf; HB10/ 100Kgf; HBT2.5/62.5, 187.5Kgf
• Rockwell test scales	A, B, C, D, E, F, G, H, K, L, M, P, R, S, V, 15N, 30N, 45N, 15T, 30T, 45T, 15W, 30W, 45W, 15X, 30X, 45X, 15Y, 30Y, 45Y, 30TM
• Test cycles	Automatic, Load, Dwell, Unload
• Indentors	Brinell / Balls 1 - 2.5 - 5 - 10 mm; Vickers Diamond 136° Rockwell Diamond Cone 120° Rockwell balls 1/16", 1/8", 1/4", 1/2"
• Force control	1- 99 seconds
• Data Output	USB-2
• Specimen accommodation	Max. height: 180mm (standard) Max. throat: 165mm (standard)
• Cylindrical Surfaces	Starting at 3mm diameter
• Dimensions	700mm x 200mm x 500mm (LxWxH)
• Weight	90 kg
• Power Supply	220V / 50Hz
• Guarantee	2 years limited guarantee

## ORDER DETAILS

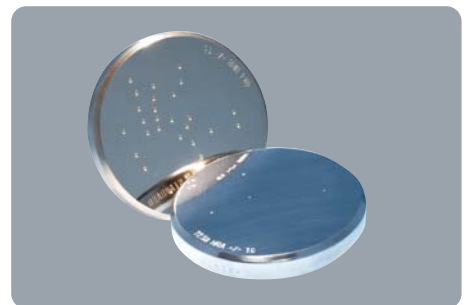
<b>NEXUS® 703</b>	Rockwell, Super-Rockwell, Vickers (HV) & Brinell (HB)
<b>NEXUS® 704</b>	Rockwell, Super-Rockwell, Vickers (HV & HVT), Brinell (HB & HBT)

## STANDARD ACCESSORIES

- Main unit
- Rockwell C indenter
- Vickers indenter
- Brinell indenter 2.5mm
- Testblock HRA
- Testblock HRC
- Testblock HRB
- Testblock HV30
- Testblock HB2.5/187.5
- 37.5x objective
- 70x objective
- Flat anvil 60mm
- Flat anvil 150mm
- Testing table 150mm
- V-anvil 40mm
- Installation & user manual
- Calibration certificate
- Toolset

## OPTIONAL ACCESSORIES

- Objective for 140x magnification
- Certified indentors & testblocks
- Long Vickers indenter
- Other testing tables and XY-stages
- Precision vices, V-blocks and special clamps
- Software solutions for advanced applications



Represented by:

INT0-002

## **CORPORATE HEAD OFFICE**

### **INNOVATEST Europe BV**

Borgharenweg 140

6222 AA Maastricht (The Netherlands)

Phone: +31 43 3520060

Fax: +31 43 3631168

Email: [sales@innovatest-europe.com](mailto:sales@innovatest-europe.com)

*Changes in products and/or product specifications can emerge due to new technologies and continuous development.*

*We reserve the right to change or modify specifications of products without prior notice.*

*We recommend you to contact our sales office for up-to-date information.*

*© All rights reserved*

[www.innovatest-europe.com](http://www.innovatest-europe.com)